

**DISTRIBUTION  
AS PER THE LIST ATTACHED**

**SPECIAL MAINTENANCE INSTRUCTIONS NO.  
RDSO/ELRS/SMI/135**

**Dismantling instructions and fixture details for the removal of pinion  
(Pt. No. 6101) of crank shaft on (SMGR).**

**1. OBJECT**

Railways have reported a problem in replacing the pinion (Pt. No. 6101) from the crank shaft in case of worn out Pinion.

**2. INSTRUCTION**

The following procedure is to be adopted for the removal of pinion (6101). The required fixture can be made/procured as per enclosed HBB drawing No. SWT 5114 sheet 2.

- Remove the flywheel (Pt. No. 2112) from the crank shaft;
- Hold the pinion (Pt. No. 6101) in the clamping plate (P1) using hex. screw M6x35 as shown in the drawing;
- Screw the stud P4 on the clamping plate;
- Fix the spacer (3) and support plate (2) on to the crankshaft using hex. screw M10x40;
- Screw on the hex. nut M10 on the stud P4 as shown by alternatively screwing the nuts on the two studs. Then the clamping plate alongwith the pinion pt.No. 6101 will come out.

**3. REFERENCE**

HBB Instructions No. SWT 5114 in two sheets.

**4. PERIODICITY**

Whenever required.

**5. INSTRUCTION DRAWING**

HBB Drawing No. SWT 5114 sheet 2.

**6. APPLICATION**

Locomotives fitted with No. 32 tap changer.

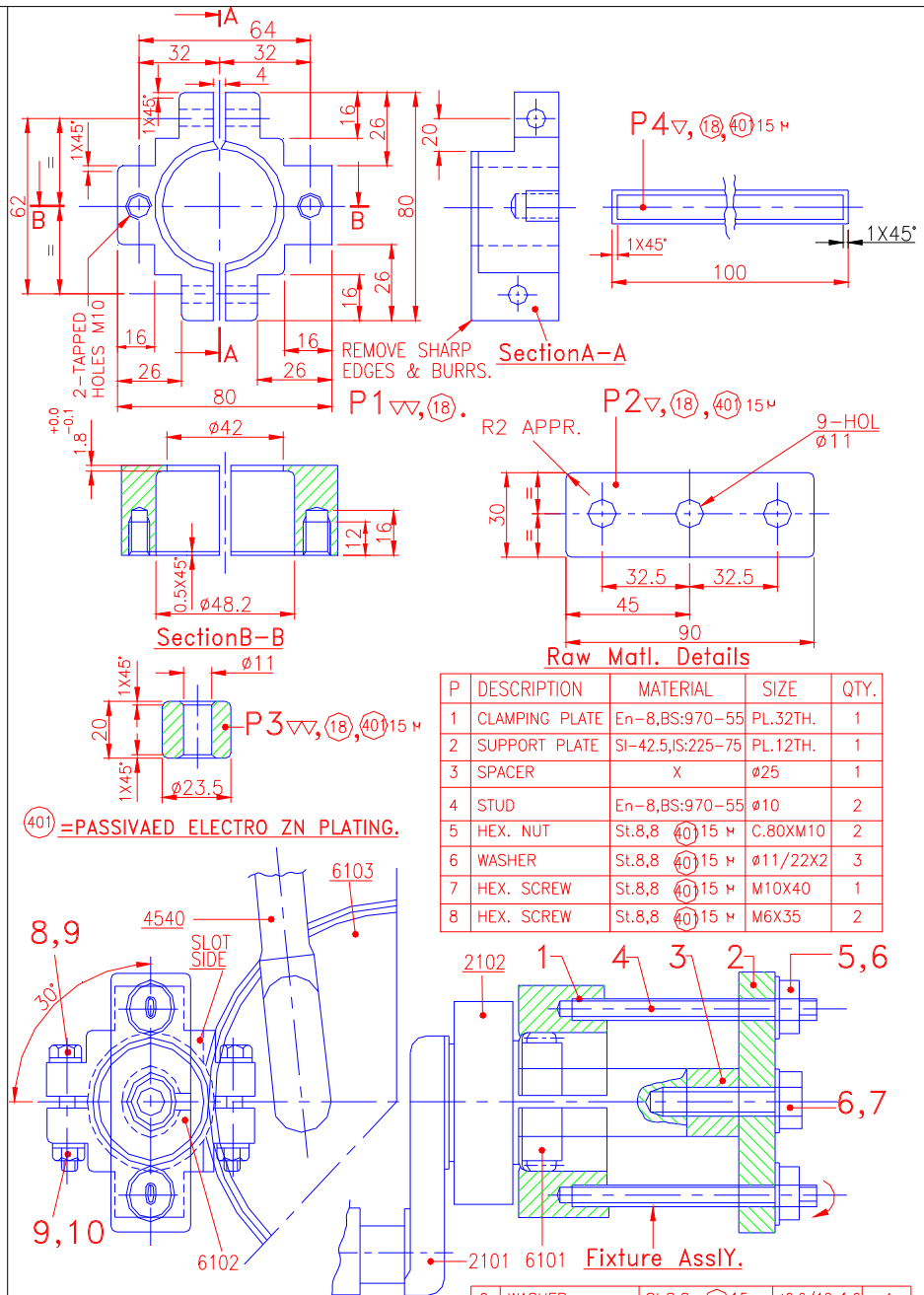
**7. AGENCY OF IMPLEMENTATION**

Electric loco sheds and repair shops of railways.

Encl : Two



(S.S. Khurana)  
for Director General/Elect.



HINDUSTAN BROWN BOVERI

SWT-5114